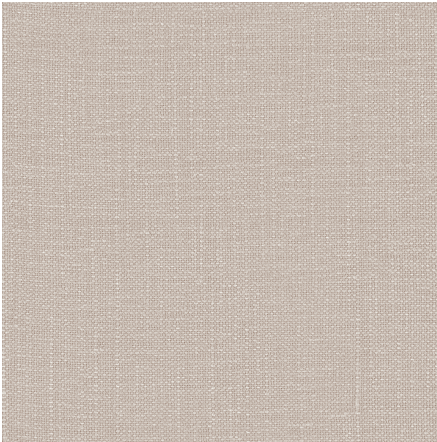




ZIMMER+ROHDE



Product data sheet






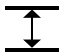

The multifunctional BRUSHED LINEN décor fabric is laidback and elegant at the same time. The front and reverse are equally beautiful, thanks to the meticulous finishing process. The opaque linen fabric is gently brushed on both sides just after dyeing. This brings out the vibrancy of the linen, along with its hue and texture. In a further step, the fabric is again gently processed to give the linen quality its unmistakably soft feel.

The warm and fresh summery color palette is a homage to nature, like a gentle Mediterranean breeze that brings lightness and joie de vivre into each room.

BRUSHED LINEN is made of 100% environmentally friendly European linen (European Flax certification) and is woven in double width. The entire finishing process conserves resources and is carried out without chemical additives.

Zimmer + Rohde

Brushed Linen

ARTICLENUMBER	10991843
COLLECTION	Zimmer + Rohde - F24
NUMBER OF COLORS	18
CATEGORY	Fabrics
MOTIVE	Uni
FABRIC WIDTH	310 cm
EFFECTIVE WIDTH	-
WEIGHT	417 g/m²
MATERIAL	100% Flax (linen)
MARTINDALE	-
CARE INSTRUCTIONS	    
ADDITIONAL INFORMATION	Recommend puddle on the floor
PROPERTIES / USAGE	Room high Not washable
	  300_{EN} PLUS
ACOUSTIC PROTECTION	-
LIGHT FASTNESS (EN ISO 105-B02)	4 - 5
DYEING METHOD	piece dyed
PILLING (EN ISO 12945-2)	-
RAPPORTWIDTH	-
RAPPORTHEIGHT	-
MANUFACTURING METHOD	-



ZIMMER+ROHDE