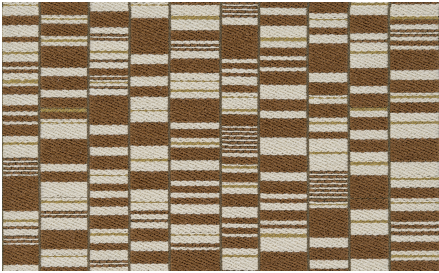




ZIMMER+ROHDE



Product data sheet






The charm of this geometric jacquard woven fabric, lies in its simple but very expressive composition.

Contrasting rectangular shapes form a rhythmic all-over design. The more neutral color palette is based on a natural spectrum of wood, sand, and earthy tones which are combined with creamy white. The striking monochromatic colourway is softened with other accents.

ELSWORTH is very versatile and can be perfectly combined with upholstery fabrics ANTONI, PANAMA WOOL and INFINITY BOUCLÉ.

Zimmer + Rohde

Elsworth

ARTICLENUMBER	10962827
COLLECTION	Abstract
NUMBER OF COLORS	4
CATEGORY	Fabrics
MOTIVE	Small-scale pattern
FABRIC WIDTH	136 cm
EFFECTIVE WIDTH	-
WEIGHT	742 g/m ²
MATERIAL	39% Cotton, 24% Viscose, 20% Polyester, 12% Acrylic, 5% Other fibers
MARTINDALE	30000
CARE INSTRUCTIONS	    
ADDITIONAL INFORMATION	-
PROPERTIES / USAGE	-
ACOUSTIC PROTECTION	-
LIGHT FASTNESS (EN ISO 105-B02)	5
DYEING METHOD	yarn dyed
PILLING (EN ISO 12945-2)	-
RAPPORTWIDTH	34 cm
RAPPORTHEIGHT	20 cm
MANUFACTURING METHOD	-