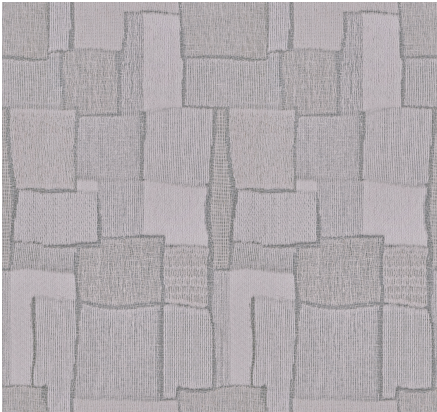




ZIMMER+ROHDE










Product data sheet

The original inspiration for CUT OUT was a collage of differently textured pieces of paper in a variety of off-white hues. The diversity of surface structures is achieved through the different weaving techniques and the use of a variety of yarns. The floor-length 'scherli' fabric also plays with transparency and opacity. A distinctive game of shadow and light for your window.

Zimmer + Rohde

Cut Out

ARTICLENUMBER	10953982
COLLECTION	Soul Spaces
NUMBER OF COLORS	2
CATEGORY	Fabrics
MOTIVE	-
FABRIC WIDTH	310 cm
EFFECTIVE WIDTH	-
WEIGHT	291 g/m²
MATERIAL	51% Flax (linen), 29% Cotton, 10% Viscose, 9% Polyester, 1% Polyamide
MARTINDALE	-
CARE INSTRUCTIONS	    
ADDITIONAL INFORMATION	Recommend puddle on the floor
PROPERTIES / USAGE	Room high washable   300 _{cm} PLUS
ACOUSTIC PROTECTION	-
LIGHT FASTNESS (EN ISO 105-B02)	5
DYEING METHOD	piece dyed
PILLING (EN ISO 12945-2)	-
RAPPORTWIDTH	41 cm
RAPPORTHEIGHT	71 cm
MANUFACTURING METHOD	Burnout