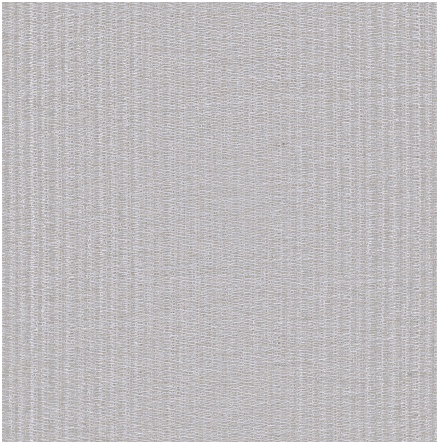




ZIMMER+ROHDE







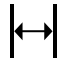


Product data sheet

ALCHEMIST is dedicated to the science of material and its properties. The finely textured Inbetween fabric astonishes with its metallic and elegantly shimmering surface. Legends surround the ancient teachings of alchemy and this beautiful plain fabric seems also to suspend the laws of chemistry. The fine texture of the fabric looks almost like metal had been woven into fabric, or as if fabric has been transformed into metal.

Zimmer + Rohde

Alchemist

ARTICLENUMBER	10956980
COLLECTION	Soul Spaces
NUMBER OF COLORS	7
CATEGORY	Fabrics
MOTIVE	-
FABRIC WIDTH	315 cm
EFFECTIVE WIDTH	-
WEIGHT	165 g/m ²
MATERIAL	62% Polyester, 26% Cotton, 6% Viscose, 6% Flax (linen)
MARTINDALE	-
CARE INSTRUCTIONS	    
ADDITIONAL INFORMATION	-
PROPERTIES / USAGE	washable   300 ^{mm} PLUS
ACOUSTIC PROTECTION	-
LIGHT FASTNESS (EN ISO 105-B02)	5
DYEING METHOD	yarn dyed
PILLING (EN ISO 12945-2)	-
RAPPORTWIDTH	-
RAPPORTHEIGHT	-
MANUFACTURING METHOD	-