



Carnet de Voyage – Jardin de Fragonard | Collection Spring 2018

Carnet de Voyage

The *Carnet de Voyage* is a travel journal that captures impressions and little souvenirs such as spices, pictures and other fragments of exotic atmospheres. This collection represents the diary of a journey to India that begins in Rajasthan, and leads to Kashmir and over the Himalaya Mountains. It tells of the turban wearers in Jaipur, the Pink City, and the palaces of Rajasthan; of camel markets in the desert of Jaisalmer, of Indian street traffic with cows, and of the houseboats on Lake Dal at the foot of the Himalayas. There are likewise souvenirs in our *carnet*: the colours of the saris, peacocks, artistically-wound turbans, colourful street scenes, the sparseness of the desert, the blue sky and the shades of the Himalayas. From these motifs, the watercolour images and colourations of *Horizont* emerge in vibrant blue, and the printed wild garden of *Jardin Sauvage* unfolds. Exotic fauna makes an appearance in *Caravane*, a caravan of elephants, gazelles, antelopes and lions that spread across the linen base as majestic embroidery. *Souvenir* testifies to the expert craftsmanship of the country, with its specially developed and dyed velvet ribbons applied to the fabric. The embroidered ribbons, consisting of different stitches and colours, serve as additional ornamentation.

Jardin de Fragonard

The legendary Fragonard family of Grasse in southern France brought forth a number of illustrious people: the rococo painter Jean-Honoré, whose famous painting “The Swing” was a scandal at the time, as well as the renowned anatomist Honoré and his father, a glove-maker and perfumer who could be straight out of the best-selling novel “The Perfume”. Even today, Fragonard, named in honour of the painter, is one of the most significant perfumeries in Grasse, the city of fragrances, where thousands of tonnes of jasmine and orange blossoms are processed every year. *Jardin de Fragonard* is inspired by the history of this obscure family and their sensuous birthplace and transforms it into a daring collection. *Contesse* is a tribute to the rose. The motif is printed on elegant satin in richly contrasting colours, bringing to life the splendour of the flower and its captivating aroma. The delicate print *Grâce*, on the other hand, takes up the timbre of the painter Fragonard, whose work anticipated impressionism, and displays gracefully painted watercolour cranes on a linen background. French classicism is embodied in *Bonheur*, an elegant striped silk fabric, and the upholstery fabrics *Pivoine* and *Secret*, which round out the collection.

Carnet de Voyage - Jardin de Fragonard | Collection Spring 2018

Brise | 19529

6 Colourways
50% Polyester, 50% Linen
Width: 305 cm



Like the name promises, this semi-transparent woven linen fabric seems to be as delicate and aromatic as a light breeze. A classic striped pattern with select colour accents on a light background gives this fabric its appeal.

Tendresse | 19532

5 Colourways
85% Polyester, 15% Linen
Width: 290 cm



Tendresse is an all-rounder. It fits into every interior, but still retains its singular character with its light and subdued crash effect. This is a single-colour article with a matte-gloss effect in delicate tones.

Secret | 19530

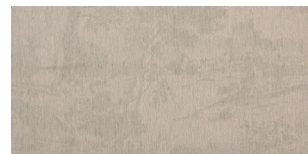
10 Colourways
62% Cotton, 38% Polyester
Width: 140 cm
25.000 Martindale



A classic small pattern, it is very distinctive and can be used in a variety of interiors. Its two-tone pattern, consisting of a single colour and a delicate shade of ivory, is a beautiful supplement to *Pivoine*, but it is also ideally suitable as a universal upholstery fabric.

Giverny | 19533

3 Colourways
53% Linen, 26% Polyester,
21% Viscose
Width: 300 cm



A delicate landscape motif decorates this room-high decoration. The light fabric, mainly made of linen, distinguishes the appearance of this semi-transparent article.

Pivoine | 19531

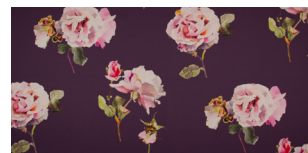
8 Colourways
45% Cotton, 44% Viscose,
11% Linen
Width: 140 cm
30.000 Martindale



A dry, cotton-linen quality fabric with classic French colours, ranging from stone, rosé and pistachio to turquoise, blue and magenta. It is an ideal flat woven fabric for upholstery and lends a feminine touch to every atmosphere.

Contesse | 19534

5 Colourways
100% Cotton
Width: 150 cm
Usable Width: 139 cm



Artfully painted watercolour roses decorate an elegant and noble cotton satin. Thanks to its high-resolution colours and fine satin surface, the print exudes a brilliant radiance. With its romantic rose motif, *Etamine* takes up the tradition of “La vie en rose” and executes it in modern, contemporary colours. The rose radiates on either a grey, bordeaux, violet or turquoise background.



ETAMINE

PARIS

Grâce | 19535

3 Colourways

100% Linen

Width: 145 cm

Usable Width: 133 cm



A gentle watercolour depicting a pair of cranes decorates this pure linen. The grace of the majestic birds gives this printed fabric its special flair. The mood of the colours and background is as gentle as their feathers. With restrained elegance, this decoration makes a charming addition to any room.

Jaipur | 19538

4 Colourways

Ground: 60% Linen, 40% Cotton

Embroidery: 100% Polyester

Width: 145 cm

Usable Width: 130 cm



This vividly coloured embroidery is based on a zig-zag motif. On a cotton-linen base, it decoratively runs over the width of the fabric at an offset. The motif is composed of seven different embroidery colours in a matte cotton. The shades of the four different colourations range from neutral to pastel colours, and from aqua tones to bright red hues.

Bonheur | 19536

5 Colourways

Ground: 44% Cotton,

36% Polyester, 20% Silk

Application: 100% Polyester

Width: 140 cm



On a fine silk weave, these elegant stripes are created with warp and weft. The silk fabric is embellished with the application of a diamond motif trim that is added among the woven stripes. The decorative border is separately woven on a ribbon loom and repeats itself four times with the stripe over the entire width of the fabric. This striped material makes a lovely colour supplement to *Contesse* and *Grâce*.

Horizont | 19539

5 Colourways

100% Linen

Width: 150 cm



Here the colour palette of *Carnet de Voyage* is apparent, with expressive, horizontal stripes like those in a sketchbook. With the blue tone, you can hear the sound of the sea and envision the sand and the sky. Overall, five expressive moods have been created. The linen material wonderfully transports the colours and supports the watercolour technique with its grain.

Caravane | 19537

2 Colourways

Ground: 60% Linen, 40% Cotton

Embroidery: 50% Polyester,

50% Viscose

Width: 140 cm | Usable Width: 128 cm



Caravane is inspired by archaic ethnic motifs from India. A caravan of elephants, gazelles, antelopes and lions populates the linen base as noble embroidery. The embroidery of this *Caravane* is restrained in its colour palette, but intricate in the embroidery technique that is individually carried out for every single motif.

Souvenir | 19540

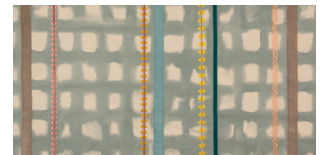
3 Colourways

Ground: 100% Cotton

Application: 100% Polyester

Embroidery: 100% Viscose

Width: 155 cm | Usable Width: 132 cm



This must be the most elaborate textile in this collection. Specially developed and dyed velvet ribbons are applied on a printed cotton background. The intermittent embroidered ribbons, consisting of different stitches and colours, serve as additional ornamentation.

ETAMINE

PARIS

Bikaner | 19541

5 Colourways

72 % Polyester, 28 % Linen

Width: 300 cm



The rhythmic, room-high stripes are formed with a voluminous thread that sets itself distinctively apart from the base material. The natural matte look of the linen base fabric perfectly plays off the look of the stripes, which display a subdued shimmer.

Traits | 19544

3 Colourways

96 % Linen, 3 % Cotton,

1 % Polyester

Width: 305 cm



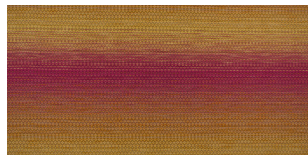
This delicate linen fabric with transparent cutouts and contrasting thread wefts was created using the Scherli technique.

Ombre | 19542

6 Colourways

90 % Cotton, 10 % Polyester

Width: 140 cm



Ombre is a decorative fabric with a generous horizontal stripe that displays a two-tone colour gradient. The special part of this gradient is the distinctive textile structure – a creation for fabric lovers!

Samarcande | 19545

5 Colourways

60 % Cotton, 25 % Viscose,

15 % Polyester

Width: 145 cm



An interesting Jacquard whose pattern is reminiscent of an Uzbek ikat. The Jacquard technique has made it possible to translate this involved binding technique, which has been passed down for centuries in Samarkand, into a weaving technique.

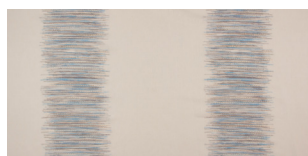
Ébauche | 19543

5 Colourways

45 % Linen, 30 % Cotton,

15 % Polyester, 10 % Viscose

Width: 305 cm



Ébauche is a particularly attractive cotton-linen quality fabric that is semi-transparent. This room-high quality fabric, with a loose striped design in many colours, particularly stands out from the base fabric with its structure and colouration. It appears to be an embroidery, although it is actually a Scherli.

Kelim | 19546

8 Colourways

50 % Viscose, 30 % Cotton,

10 % Linen, 8 % Acrylic,

2 % Polyester

Width: 145 cm

25.000 Martindale



Kelim comes to life with its multicolour character. It can be used in both classic and modern settings, and its multicolour threads liven up the surface of every piece of furniture.

ETAMINE

PARIS

Jardin Sauvage | 19547

5 Colourways

100% Cotton

Width: 142 cm

Usable Width: 136 cm



A floral and leaf pattern, printed on a particularly fine, flowing cotton, transforms this creation into a printed wild garden. The resulting leafy forest forms a strong contrast - reminiscent of a silhouette - to the light background. The lively colour palette of yellow, aqua, magenta and cornflower blue sets the tone.