

ardecora

Milano



COLLECTION AVANTGARDE

by Zimmer + Rohde

“Last fall I visited an exhibition about the Maharaja of Indore. His open mind, his modern style and his elegance inspired me to dedicate my collection to this special era in which he acted, the Art Déco.”

Katharina Schmitter

The Twenties – Art Deco’s heyday. Glamour, societal change, and the liberal arts are gaining popularity in the modern age. Stylish nobility and an abstract design language seem to have announced their arrival in the Avant-Garde movement. In Ardecora’s case, even in the new millennium, the latest AVANTGARDE collection rewrites the story of this passionate era by reinterpreting its fascination, vitality and dichotomy with a contemporary twist. A creative palette encompassing fabrics, embroidery and graphics shows off the extravagance while maintaining a minimalistic side.

EMBLEMA, the contemporary part of the collection, is comprised of both linear and constructivist motifs. Metallic beats set the rhythm for the ellipse design that dances its way across the soft, draping velour that is MOVIMENTO. GIOIELLI, meanwhile, adds a more feminine touch to the collection and mesmerises onlookers with natural and playful treasures. In CRISTALLI, the distinctive satin background is stylish and sophisticated, while the silver, gold and copper appliquéd beads radiate splendour. TORMALINA combines the two worlds that the collection inhabits in one lush feather look that scatters into countless, tiny, geometric squares up close.

With the AVANTGARDE collection, Ardecora puts the spotlight firmly on the exciting contrast between decorative elements and urban architecture, while inviting you into a new era of the design – one that is contemporary, elegant and inspiring.

Avant garde

OPALE



Opale 15474 944

A play of light and shadow

This expressive interpretation of a floral motif is one of the collection's top highlights. The decorative leaf shapes effortlessly intertwine on the elegant velour background. Metallic pigments flowing through the printed motifs bring the fascinating light and shadow effects to life, giving OPALE a truly unique feel.





DIETRICH



Dietrich 15468 895

DIETRICH is a distinctive, wide width, transparent fabric with a refined feel. Small, subtle, two-tone woven strips have been embroidered into the mesh fabric in the shape of diamonds using an innovative appliqué technique, lending this low-maintenance textile its charming character.

**MITO
ICONA**

This high-quality jacquard velour captivates onlookers with its elegant feel and vibrant interplay of colours. MITO is a contemporary and refined interpretation of a classic motif that boasts a very pleasant look. The slightly raised fringes enhance and accentuate the three-dimensional effect of the medallion pattern. They also give the fabric its interesting patina effect.

This is a decorative upholstery fabric in an all-over look with embroidered motifs on faux leather. The subtle nuance of the colour composition in the embroidery underscores the fabric's three-dimensional effect and accentuates the rhythmic sensation created by the pattern. ICONA draws you in with its vibrant colour palette and clear graphic effect.

charmingly classic



- 01 Mito 15462 184
Keder: Tormalina 15464 183
- 02 Tormalina 15464 183
Keder: Zimmer + Rohde
Colibri 10392 998
- 03 Icona 15473 818
Keder: Tormalina 15464 183



STRUTTURA

Structured spaces

Innovative and expressive, this interpretation of a transparent weave has a pleasant all-over effect. The interplay of the matte background and the appliquéd, geometric faux leather will integrate this attractive fabric seamlessly into any timeless interior design concept. STRUTTURA is an absolute eye catcher!



Struttura 15469 888

At the pulse of the modern age

This prestigious and wonderfully decorative print was inspired by architectural elements from the Golden Twenties. The soft, flowing velour background and the elegant, shimmering motifs come together with an effortless sophistication that underscores the rhythmic sensation created by the pattern. The elegant colour palette allows the vibrant interplay of the colours to shine through, making MOVIMENTO a true highlight in any sophisticated interior design scheme.



01 Movimento 15475 255
02 Tormalina 15464 255

02

01

CUBISMO

CUBISMO has a clear, stylish design that will add an accent to any sophisticated interior. Inspired by the geometric design language of the avant-garde movement of the same name, CUBISMO makes a strong statement. A precise digital printing technique was used for this fabric, extending a graphic motif across the high-quality, softly draping cotton satin.

Linear
without
compromise





Visione 15467 297

VISIONE



Constructive sophistication

VISIONE drew its inspiration from the architecture of the Golden Twenties. The handstitched embroidery of this regal striped pattern combined with subtle tones and three-dimensional relief is simply captivating. The elegant, iridescent effect of the jacquard background rounds off the sophistication and modernity of this refined fabric.

TORMALINA

Contemporary and highly attractive, this jacquard patterned quality has a soft, flowing surface. TORMALINA draws you in with its elegant and exciting colour palette that gives this fabric its refined and eye-catching vigour. The graphic pattern's stylish interpretation evokes a look reminiscent of the fine lines of a feather, which perfectly matches the collection's colour palette.

Lusso

Timeless Elegance

LUSSO is the epitome of when craftsmanship meets timeless elegance. The innovative interpretation of this stripe pattern is the result of a highly sophisticated manufacturing process. First individual velour stripes are woven together, then they are embroidered before being decorated with fine sequins. In the last stage, the finished velour tapes are embroidered onto the woven jacquard stripes.



- 01 Icona 15473 954
- 02 Icona 15473 985
- 03 Opale 15474 944
- 04 Cristalli 15465 883



Diamanti 15470 494

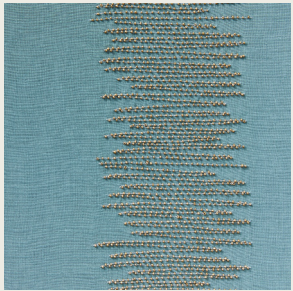
DIAMANTI
MITO



- 01 Mito 15462 184
- 02 Mito 15462 485
- 03 Mito 15462 897



This is an expressive and stylish striped barré fabric on an opulent linen-satin blend. The different embroidery elements shimmer in a subtle shift of colour and create a delightful combination together with the matte linen background. They evoke imagery of small precious gemstones and lend DIAMANTI its refined beauty.



CRISTALLI
15465
5 Colorways



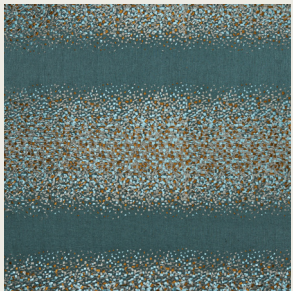
CUBISMO
15472
3 Colorways



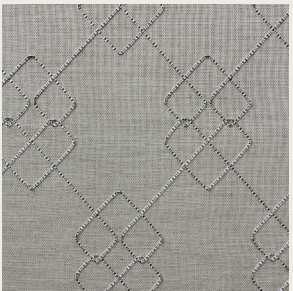
MITO
15462
8 Colorways



MOVIMENTO
15475
7 Colorways



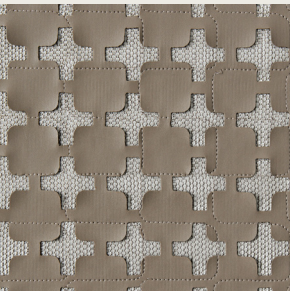
DIAMANTI
15470
6 Colorways



DIETRICH
15468
4 Colorways



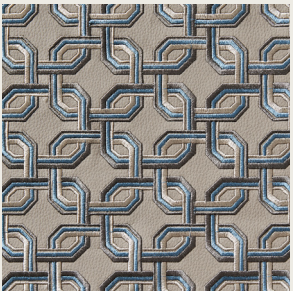
OPALE
15474
4 Colorways



STRUTTURA
15469
3 Colorways



GIADA
15471
4 Colorways



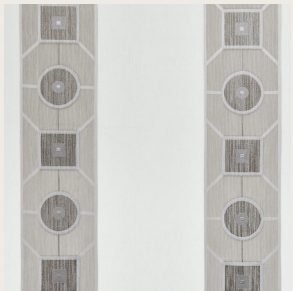
ICONA
15473
11 Colorways



TORMALINA
15464
8 Colorways



VISIONE
15467
6 Colorways



INTARSIO
15463
3 Colorways



LUSSO
15466
6 Colorways

